



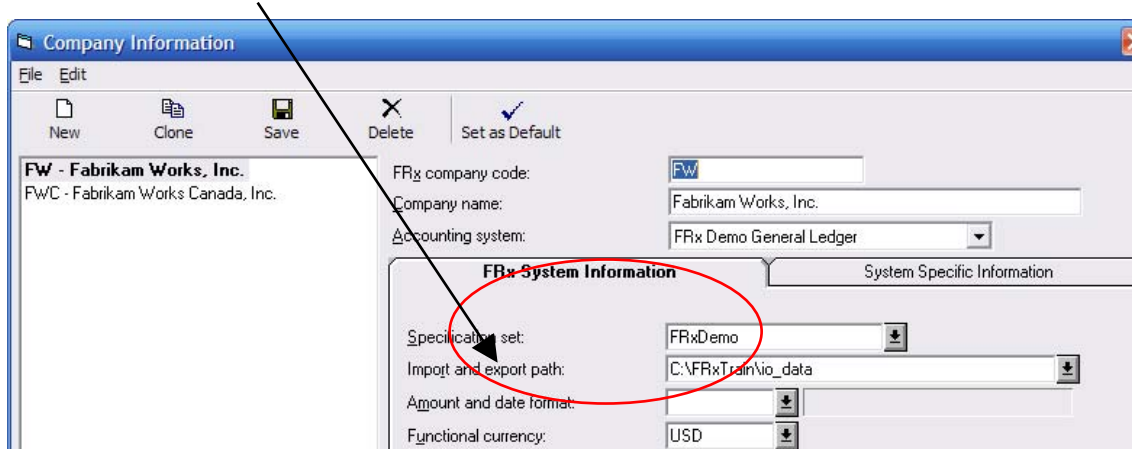
ACC Accounting Solutions, Inc P. 559-435-9000
4221 W. Sierra Madre, Suite 206 F. 559-435-9014
Fresno, CA 93722



Working with Specification Sets

Specification Sets are a grouping of your Building Blocks (Rows, Columns, Trees, and Catalogs). Every time you save one of your Building Blocks, you are saving it into a Specification Set. A Specification Set is saved in the F32 files in your SYSDATA folder of FRx. These files are very important and should be backed up, just like you would back up your accounting data. One F32 file, can contain multiple specification Sets. A Specification Set is tied directly to a company code. In a situation where we are working with multiple companies, we could have separate Specification Sets for each Company, or we can share one Specification Set for all companies.

From the **Company** menu on the FRx Control Panel, if you select **Information**, you will be able to see what Specification Set is being used for each Company you have setup in FRx.



West Shaw Business Center
4221 W. Sierra Madre, Suite 206
Fresno, CA 93722
559-435-9000

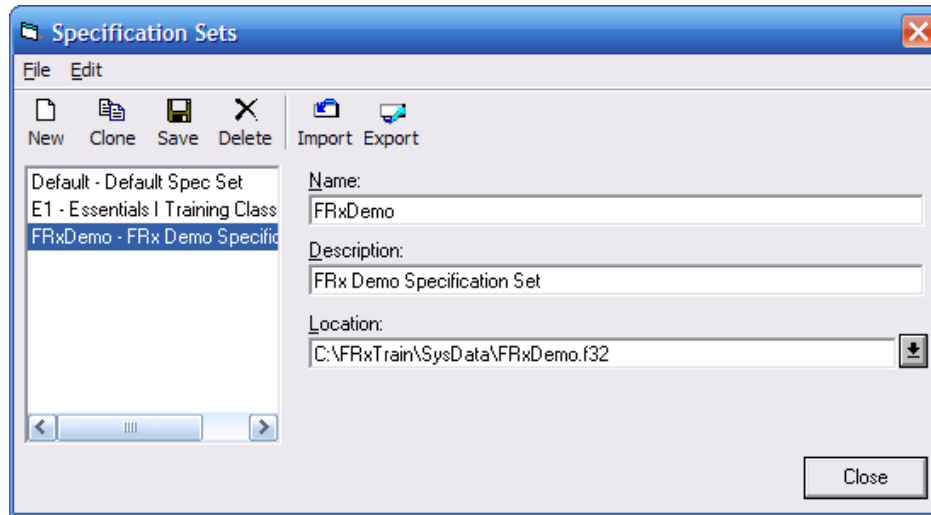
Cherry Tree Corporate Center
535 Rt 38, Suite 350
Cherry Hill NJ 08002
856-335-1010



ACC Accounting Solutions, Inc P. 559-435-9000
4221 W. Sierra Madre, Suite 206 F. 559-435-9014
Fresno, CA 93722



To maintain your Specification Sets, from the Control Panel, select the **Company** menu and the **Specification Sets** option. From this screen, we can create New Specification Sets, Delete old Specification Sets, Clone existing Specification Sets and export out of, and import into a Specification Set.



When creating a New Specification Set, or Cloning a Specification Set, you must define the Name of the Specification Set, the Description and the Save location. When naming your Specification Set, do not use any special characters. The Save Location will always default to your ... \SysData\FRxRpts.F32. This is the default Save Location. You can keep this option or create a new one. We recommend you leave the location in your SysData folder, but you can name the file anything you'd like.

West Shaw Business Center
4221 W. Sierra Madre, Suite 206
Fresno, CA 93722
559-435-9000

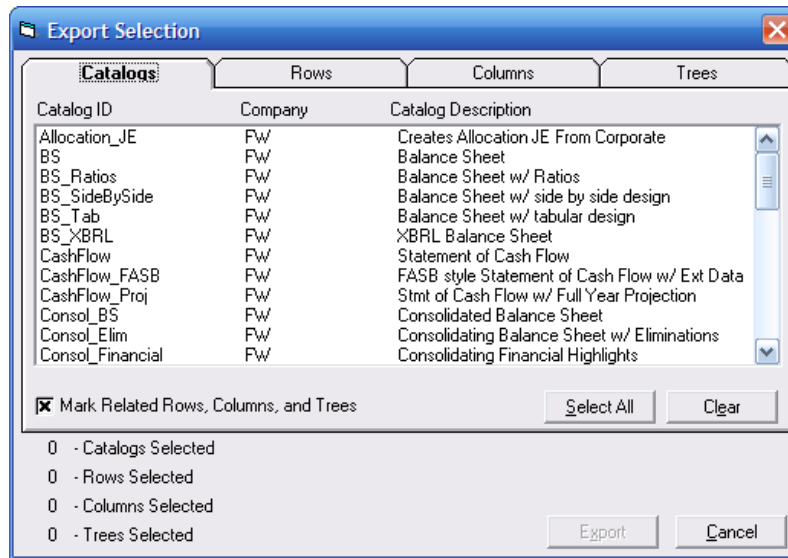
Cherry Tree Corporate Center
535 Rt 38, Suite 350
Cherry Hill NJ 08002
856-335-1010



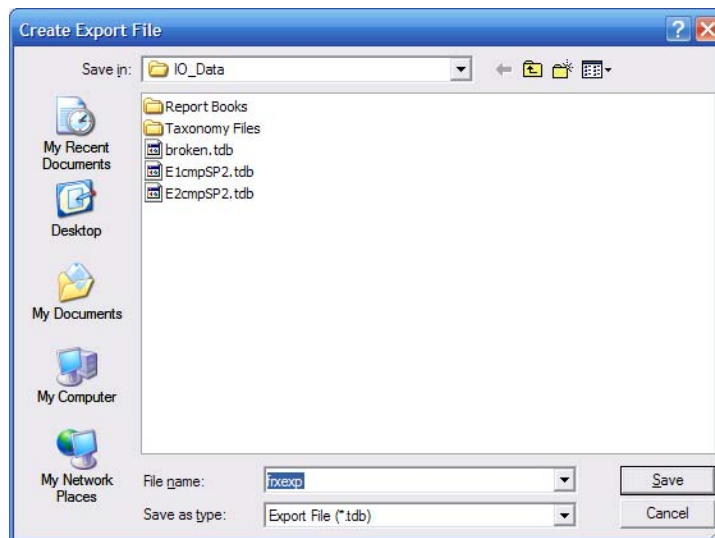
ACC Accounting Solutions, Inc P. 559-435-9000
4221 W. Sierra Madre, Suite 206 F. 559-435-9014
Fresno, CA 93722



From an existing Specification Set, you can choose the Export option, to create a .tdb file to easily move Building Blocks between Specification Sets, or even other computers. When you select Export, the Export Selection Screen will appear. Notice the “X” box on the Catalog tab, “Mark Related Rows, Columns and Trees”. Because this option is checked, when you select a Catalog, it will automatically select its components. By holding Ctrl or Shift, you can select multiple items, on any tab, giving you the flexibility to choose a Row that may not be connected to a Catalog you want.



Once you have selected the Building Blocks you'd like to export, press the Export button. This will bring you to the Create Export File screen, where you will name and save your .Tdb file. Make note of the file location you are saving to, by default this will always be the IO_Data folder, or the folder in your Company Information that is your default import/export path.

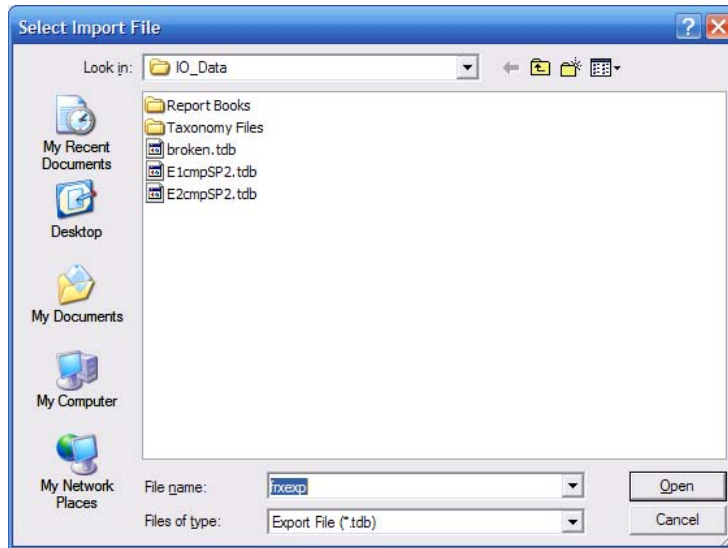


West Shaw Business Center
4221 W. Sierra Madre, Suite 206
Fresno, CA 93722
559-435-9000

Cherry Tree Corporate Center
535 Rt 38, Suite 350
Cherry Hill NJ 08002
856-335-1010



Once you have created the .tdb file you can go move this file to another computer, email it or share it over the network for other users. They can go to Specification Sets and select the import button. This will bring up the Select Import File screen, where you can point to the file you'd like to import. In the bottom left hand corner of FRx you will see the progress of the import. It should be noted that these imports and exports will also include Account Sets and Fonts.



Using Specifications Sets is an easy way to create Backups of your Building Blocks, Clean up old Specification Sets, or Create Demo/Testing environments. To clean up an old Specification Set, create a new specification set, and import into it the items you want to keep. Use this new Specification set in Company Information. The old specification set will still exist, allowing you to have access to old reports that you may have decided not to import over.